

MODEL CC21

FôrtHômes™



# The Rim

560  
SQUARE FEET

12'5 x 44'10  
DIMENSIONS

2B / 1 BA  
CONFIGURATION

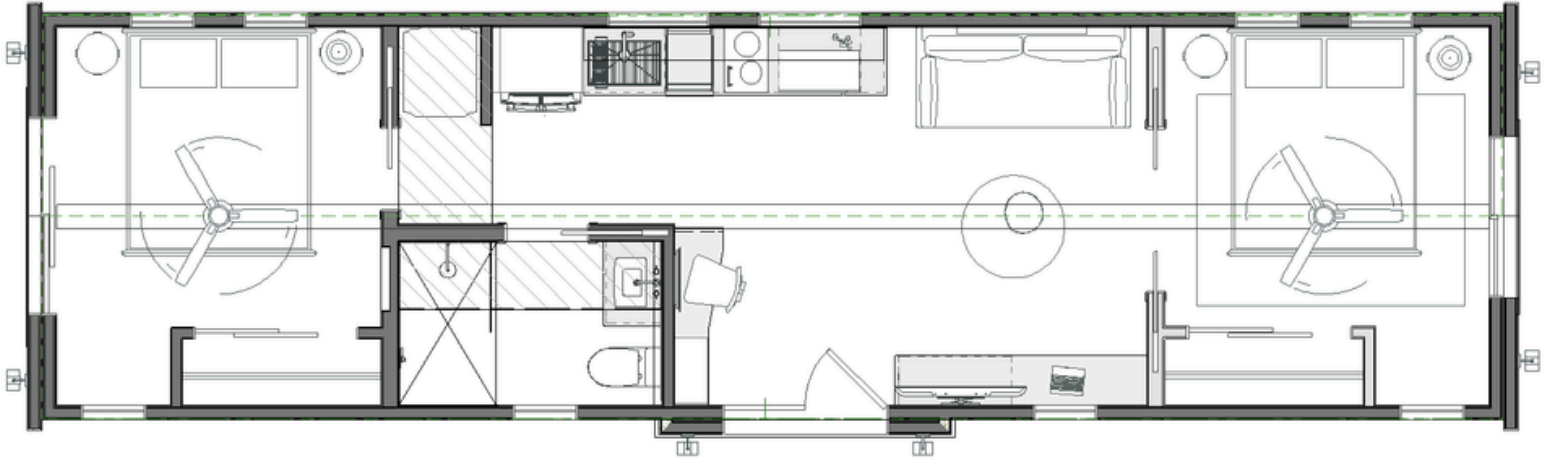
SIP  
CONSTRUCTION





# Floor Plan

FARMHOUSE PACKAGE | INTERIOR ADD-ONS SHOWN



396

SQUARE FEET

12'5 x 44'10

DIMENSIONS

2B/1BA

CONFIGURATION

12'h

VAULTED CEILINGS

## BUILDING APPROACH

### Line 1: Modular

- + Complete structure & framing
- + Finished exterior - siding, roofing, trim
- + All windows and exterior doors installed
- + Complete plumbing, electrical, and HVAC
- + Interior finishes - drywall, flooring, paint, cabinets & countertops
- + Kitchen cabinets and countertops
- + Bathroom fixtures and finishes
- + Factory-quality inspections

#### Building Approach:

- Line 1: Volumetric    Line 3: Multi-module  
 Line 2: Sip & Kit

DELIVERED COMPLETE

## PACKAGE

### Farmhouse

- + White slim shaker cabinet door style
- + White-oak Luxury Vinyl Plank
- + Marbled White Quartz Countertops
- + White Board & Batten exterior Siding
- + Thin brick parapet accents
- + Black standing seam metal roof
- + Windows with black lites

#### Select Your Finish Package:

- Desert    Mountain  
 Farmhouse    City

MATERIALS & FINISHES

## LIFESTYLE

### Available Add-Ons

- + Interior Add-Ons: Walk-in shower, TV wall built-in storage, Entry built-in storage, accent lighting
- + Bolt-ons: Garage, carport, covered entry

#### Select your Architectural & Finish Add-ons:

##### Interior Add-Ons:

- Bedroom & living sconces  
 Entry Built-in Storage  
 TV Wall Built-in Storage  
 Walk-in Shower

##### Exterior Bolt-Ons:

- Covered Entry  
 Carport  
 Single-Car Garage

OPTIONS & ADD-ONS

Designed and manufactured in the USA. Choose your approach, select your finishes, add what matters to you.



# Step *Inside.*



CONCEPTUAL RENDERING | FARMHOUSE PACKAGE

## Design *Philosophy*

The Rim is a two-bedroom home designed to balance privacy and connection — where dedicated sleeping quarters meet open, functional living space.

It's a home built for how people actually live — room to work, space to breathe, and flexibility that grows with your needs.



CONCEPTUAL RENDERINGS | FARMHOUSE PACKAGE | INTERIOR ADD-ONS SHOWN



# Welcome *Hōme*.



CONCEPTUAL RENDERING | FARMHOUSE PACKAGE

## The *Drop* Zones

EVERYTHING HAS A HOME

Deliberate storage, defined drop zones, and counter space that actually works. The layout ensures keys land where they belong, mail doesn't pile up, and every tool has a place. Function built in from day one.

## The *Living* Core

FLEXIBLE + INTENTIONAL

Open, bright, and designed for how you actually live. The layout eliminates wasted space—room for living, dining, and everything in between, with sightlines that keep the whole home connected without feeling cramped.



CONCEPTUAL RENDERING | FARMHOUSE PACKAGE



## NEXT STEPS

# Let's *build.*

The Rim is available now—factory-complete, delivered ready to move in. Whether you're a homeowner adding workforce housing, a developer solving the missing middle, or a municipality closing a housing gap, we're ready to talk.

## CONTACT

info@forthomes.com  
720.507.5583  
3199 D. Road, Bldg. D 10B  
Grand Junction, CO 81504

[fortandhome.com/forthomes](http://fortandhome.com/forthomes)

Disclaimer: Products are not finalized until offsite permit set is obtained. Specifications are subject to change until permit set is locked.